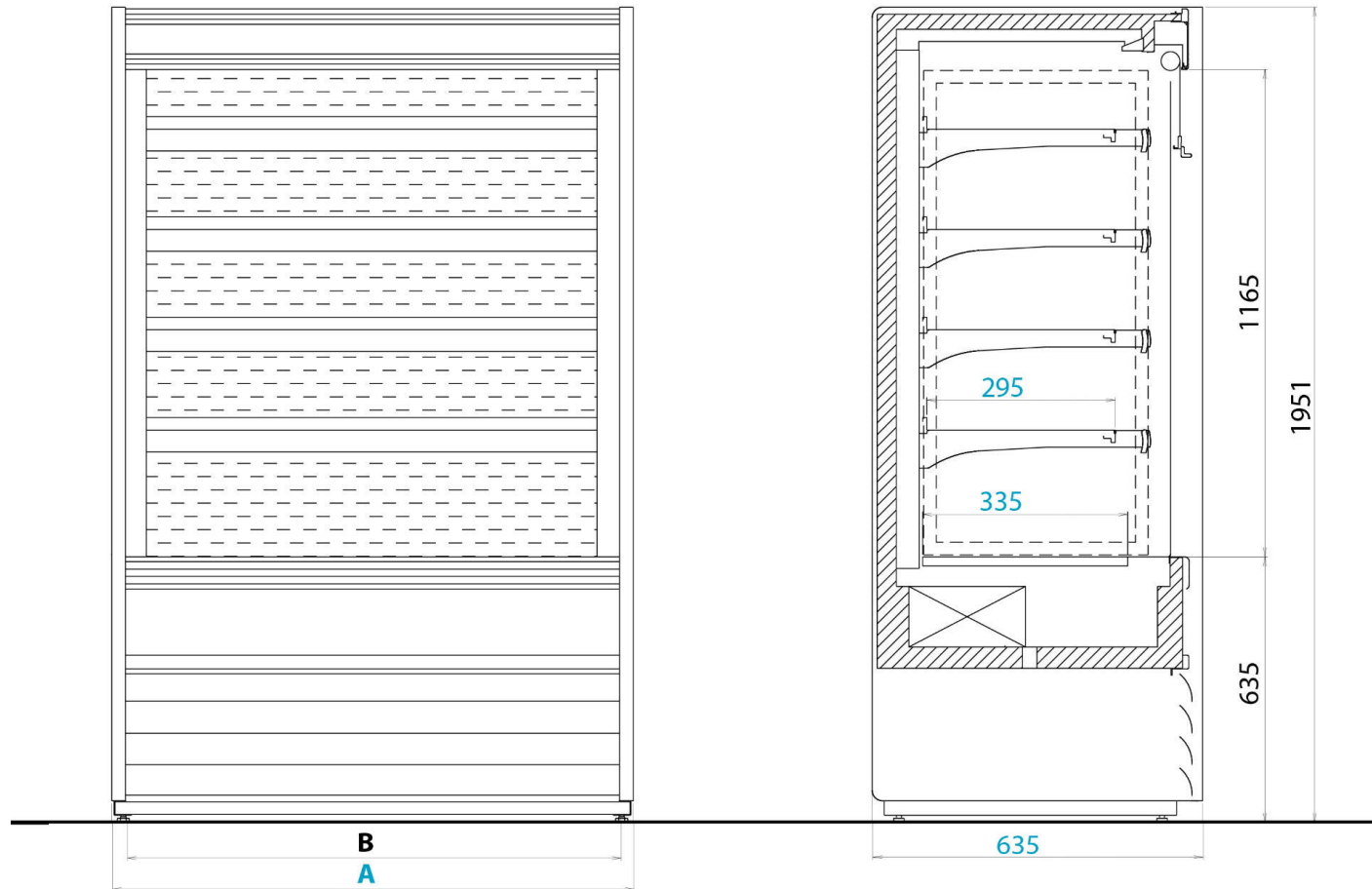
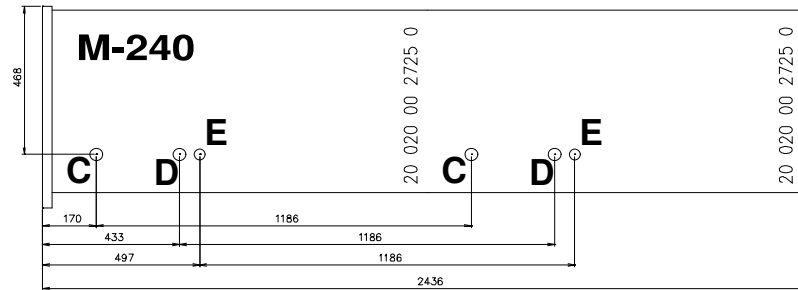


# Masszeichnung Wandkühlregal ALASKA 240 SLIM ENERGY

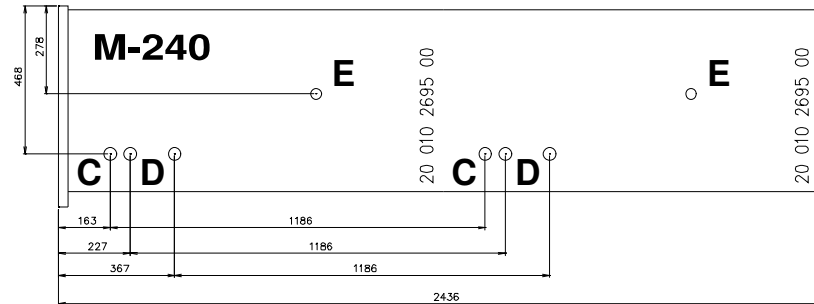


	A	B		A	B
<b>71</b>	710	645	<b>180</b>	1856	1792
<b>100</b>	960	896	<b>240</b>	2436	2372
<b>120</b>	1250	1186	<b>300</b>	2956	2892
<b>150</b>	1510	1446	<b>360</b>	3648	3584

MODELLO	VASCA	FONDO
R452 REMOTE OPEN	20 020 00 2725 0	20 040 00 0267 0
R452 REMOTE CLOSED	20 020 00 2725 0	20 040 00 0267 0
R452 INTEGRAL OPEN	20 020 00 2725 0	20 040 00 0267 0
R452 INTEGRAL CLOSED	20 020 00 2725 0	20 040 00 0267 0
R452 VBN REMOTE OPEN	20 020 00 2725 0	20 040 00 0267 0
R452 VBN REMOTE CLOSED	20 020 00 2725 0	20 040 00 0267 0
R452 VBN INTEGRAL OPEN		
R452 VBN INTEGRAL CLOSED		
R290 INTEGRAL OPEN	20 020 00 2725 0	20 040 00 0267 0
R290 INTEGRAL CLOSED	20 020 00 2725 0	20 040 00 0267 0
R290 VBN INTEGRAL OPEN		
R290 VBN INTEGRAL CLOSED		



MODELLO	VASCA	FONDO
R452 REMOTE OPEN		
R452 REMOTE CLOSED		
R452 INTEGRAL OPEN		
R452 INTEGRAL CLOSED		
R452 VBN REMOTE OPEN		
R452 VBN REMOTE CLOSED	20 010 2695 00	60 020 0430 00
R452 VBN INTEGRAL OPEN		
R452 VBN INTEGRAL CLOSED		
R290 INTEGRAL OPEN	20 010 2695 00	60 020 0430 00
R290 INTEGRAL CLOSED		
R290 VBN INTEGRAL OPEN		
R290 VBN INTEGRAL CLOSED		



C - ELEKTRISCHER KABEL (ELECTRICAL WIRES)  
D - ROHRE (PIPES)  
E - ABLAUF (DRAIN)

